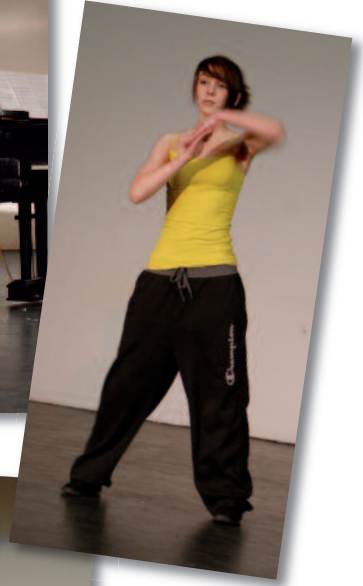




Ellesmere



Arena Arts Programme
What's On
Lent 2011

House Debate Competition

Tuesday, 25th January - Junior Heats

Wednesday, 26th January - Senior Heats

Thursday, 2nd February - Junior & Senior Finals

7.00pm start

Arts Centre or NB4

Free Admission

Inter-House Debating has a new generation of contestants. New battles will be fought: new victories will be awarded. Will Woodard win? Talbot terrorise? Meynell menace? Wakeman-Lambart wonderously lambast?



Only you can decide! Be sure to attend this DEBATE OF CHAMPIONS.

Charity Concert partly in aid of the Church and the Peter Messenger Fund All Saint's Church, Baschurch

Wednesday, 26th January

7.30pm start

£8 (U18's free) includes refreshments

Ellesmere's musicians perform a varied evening of music to raise money for the Church and the College's own fund which supports students who wish to further their musical studies.





Ellesmere College

is pleased to present

A Midwinter Concert

featuring the

Porthywaen Silver Band
and Ellesmere College Choral Society

Big School, Ellesmere College

Saturday, 29th January, 2011

7.30 pm

In aid of

**Hope House Children's Hospice
Ellesmere and District
Age Concern Day Centre**

Tickets £5.00

includes a glass of wine and interval refreshments

Available from Averil MacDonald on **01691 622510**
or Ellesmere College Enterprises on **01691 626505**
and **Fred Roberts, The Square, Ellesmere**

Transport courtesy of Lakeside Coaches from various points in Ellesmere.

To book a lift, please contact Averil MacDonald on 01691 622510

Hope House Registered Charity No: 1003859 / Ellesmere and District Age Concern Day Centre Registered Charity No: 1048229

Arts Award Evening: A celebration of the Arts at Ellesmere College

Thursday, 3rd February

7.00pm

Arts Centre



Arts Awards will be presented to pupil actors, artists, musicians, dancers and film-makers who have entertained, enlightened and enlivened us over the past year.



Throughout the evening there will be the chance to experience some of the very best scenes, songs, dances and designs of the past year: exam pieces from both A level and GCSE, solo acts and ensemble spectaculars.

In the theatre, there will be musical, dramatic and dance performances from our most gifted and talented performers and you will be able to watch clips from the best pupil films of the year. In the foyer, our visual artists will be exhibiting their work and giving live demonstrations of their skills in portraiture and the media arts. Visit backstage and see our makeup, costume and technical teams at work.

House Singing

Thursday, 17th February

7.00pm

Big School

One of the few House competitions where participation is total – this really matters! This year's theme is 'places' and as



usual promises to be an evening of excitement and high drama.

Band Night

Thursday, 3rd March

7.00pm

Arts Centre

Ticket required

Free Admission



Why not come along and listen to some of Ellesmere's finest rock musicians. Playing both original and well-known songs with great skill and energy and at a very, very high volume!

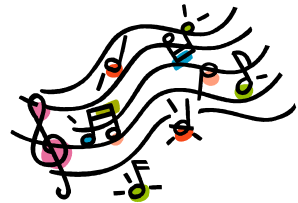
2011 Oswestry Music Festival

Thursday, March 3rd - Sunday, 6th March

Christchurch & Methodist Church,

Oswestry

Free Admission



Once again Ellesmere's musicians compete in solo, ensemble and choir classes. The Chapel Choir have won two years running – can they make it a hat-trick?



Year 7 & 8 Art Exhibiton

Wednesday, 9th March

5.30pm onwards

Arts Centre

The Year 7 and 8 exhibition reflects the diverse nature of the work produced by these year groups including portraits and the built environment.



Year 7 & 8 Play The Demon Headmaster

Wednesday, 9th & Thursday, 10th March

7.00pm

Free Admission

Tickets Required



Do you think you could be hypnotized, without your knowing it? How can you tell whether you have been hypnotized? If you think you've been hypnotized, can you overcome the effect, just by concentrating very hard? Dinah Glass starts at a new school, and finds it a very strange place. For a start, none of the children play rowdy games in the playground. They just stand around in circles, memorizing facts - multiplication tables and dates of kings and queens of England. And her two new foster brothers who she has come to live with seem very nervous of the Headmaster. She soon finds out why when she meets the head for herself...

Film Night

Thursday, 17th March

7.00pm

Free Admission

Tickets required



Another fine helping of Ellesmere Movie Pie. Come and enjoy the latest Arena offerings as well as trailers and short films written, directed and produced by GCSE and A-Level Media students.

*Age Concern Shropshire, Telford and Wrekin
Diamond Appeal*

Tea Party

Saturday 19th March

2 pm - 4 pm

Supported by

Ellesmere College and Ellesmere College Parents' Society



Haydn's Creation

Saturday, 19th March

7.00pm

Big School

Tickets £5

"A secret voice whispered to me: 'There are in this world so few happy and contented people; sorrow and grief follow them everywhere; perhaps your labour will



become a source in which the man bowed down by care, or burdened by business matters, will find peace and rest." - Haydn, 1802

Come and hear the Choral Society perform what is considered by many to be his greatest masterpiece. Experience the positive energy and sheer exuberance of Haydn's music. Book early to avoid disappointment!

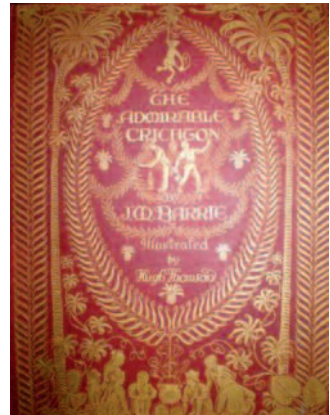
Senior School USA Touring Play Crichton by Andy Hutchings adapted from 'The Admirable Crichton' by J.M. Barrie

Tuesday, 22nd - Thursday, 24th March

7.30pm

Arts Centre

Pupils from Senior School will be performing in 'The Admirable Crichton' – a modern adaptation of the original J. M. Barrie play before they leave for their tour to Boston, USA.



Ticket Booking - 01691 626 545

or

helen.coney@ellesmere.com



Ellesmere College Lower School Open Morning

Saturday, 26th March, 2011 10 am - 12 noon



Ellesmere College Lower School is a place where the whole child is catered for; helping to nurture positive, independent, active and enquiring individuals for the rest of their education.



A 7-18 Co-educational School | A Woodard School

www.ellesmere.com

Ellesmere College | Ellesmere | Shropshire | SY12 9AB